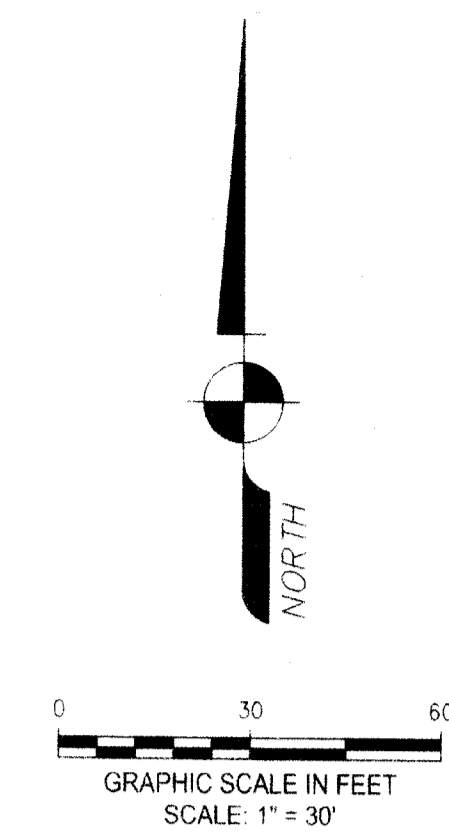


THIS INSTRUMENT WAS PREPARED BY:
 JOHN T. DOOGAN, P.L.S.
AVIROM & ASSOCIATES, INC.
 SURVEYING & MAPPING
 50 S.W. 2nd AVENUE, SUITE 102
 BOCA RATON, FLORIDA 33432
 (561) 392-2594
 L.B. #3300

LANEHART'S SUBDIVISION REPLAT NO. 1

BEING A REPLAT OF A PORTION OF LOT 7, LANEHART'S SUBDIVISION, ACCORDING TO THE PLAT THEREOF AS RECORDED IN PLAT BOOK 1, PAGE 35 OF THE PUBLIC RECORDS OF PALM BEACH COUNTY, FLORIDA. TOGETHER WITH LOT 10, MEEKS ADDITION TO BOYNTON, ACCORDING TO THE PLAT THEREOF AS RECORDED IN PLAT BOOK 9, PAGE 54 OF THE PUBLIC RECORDS OF PALM BEACH COUNTY, FLORIDA. SAID LANDS LYING IN SECTION 21, TOWNSHIP 45 SOUTH, RANGE 43 EAST, CITY OF BOYNTON BEACH, PALM BEACH COUNTY, FLORIDA.

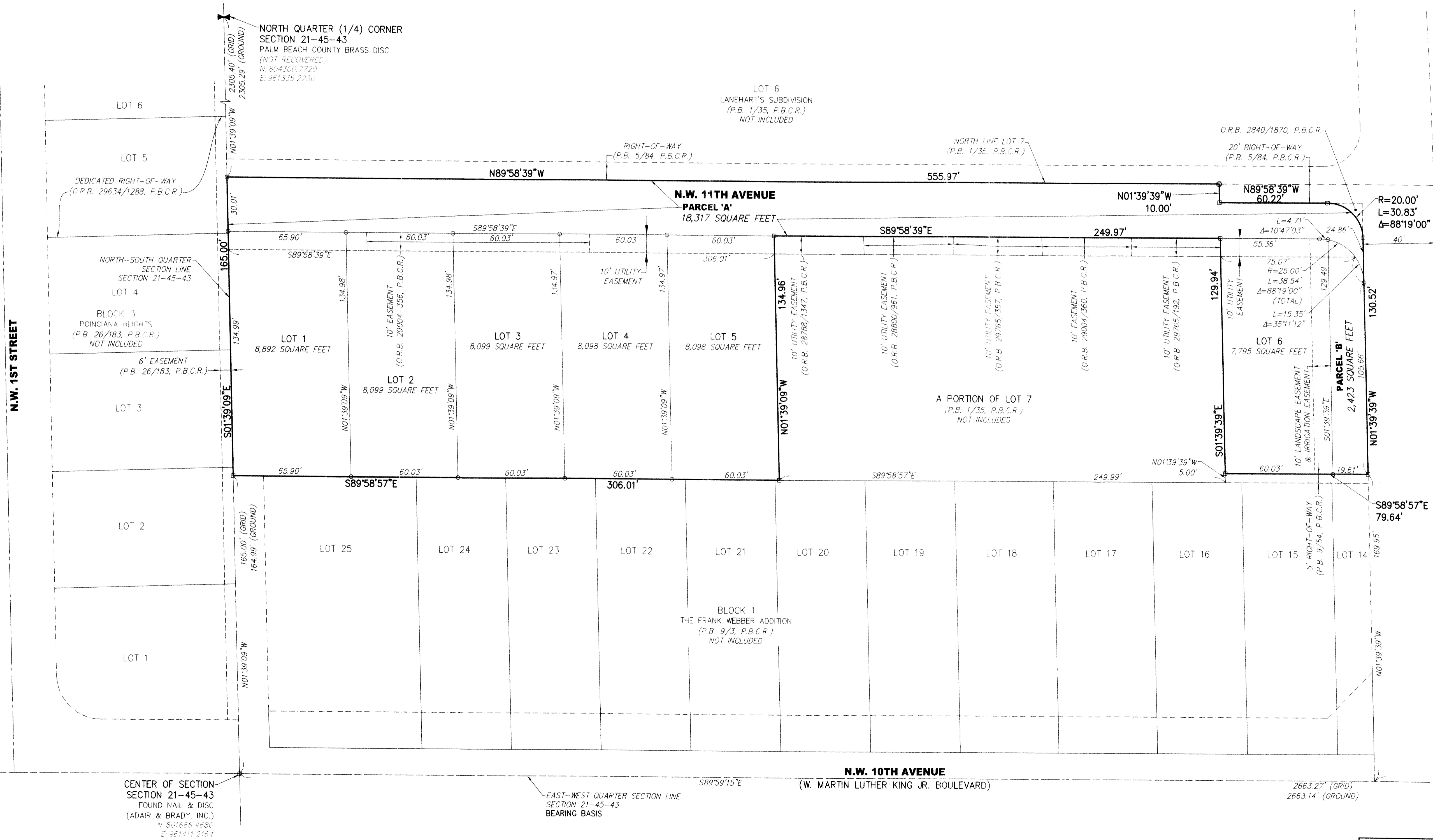


15

SHEET 2 OF 2 SHEETS

SURVEYOR'S NOTES:

- - INDICATES SET PERMANENT REFERENCE MONUMENT, A 4"x4"x24" CONCRETE MONUMENT AND 3" BRASS DISC STAMPED "PRM L.B. 3300"
 - - INDICATES SET PERMANENT REFERENCE MONUMENT, A NAIL & DISC STAMPED "PRM L.B. #3300"
 - - INDICATES SET 5/8"x18" IRON ROD WITH CAP, STAMPED "AVIROM L.B. 3300"
 - BEARINGS SHOWN HEREON BASED ON THE EAST-WEST QUARTER SECTION LINE OF SECTION 21-45-43 HAVING A BEARING OF S89°59'15"E.
 - THE COORDINATE VALUES SHOWN HEREON ARE STATE PLANE COORDINATES (TRANSVERSE MERCATOR PROJECTION), FLORIDA EAST ZONE, NORTH AMERICAN DATUM (NAD) 1983, (1990 ADJUSTMENT). CONTROL MEASUREMENTS MEET OR EXCEED CLOSURE FOR SUBURBAN LINEAR: 1 FOOT IN 10,000 FEET HORIZONTALLY AND WERE VERIFIED THROUGH A REDUNDANCY OF MEASUREMENTS. ALL DISTANCES ARE GROUND DISTANCES IN U.S. SURVEY FEET UNLESS OTHERWISE NOTED. SCALE FACTOR = 1.00004988
 - GRID DISTANCE = (GROUND DISTANCE) X (SCALE FACTOR)
 - BUILDING SETBACK LINES SHALL BE AS REQUIRED BY CURRENT CITY OF BOYNTON BEACH ZONING REGULATIONS.
- ABBREVIATION LEGEND: G - CENTERLINE, F.S. - FLORIDA STATUTES, L.B. - LICENSED BUSINESS, O.R.B. - OFFICIAL RECORD BOOKS, P.B. - PLAT BOOK, P.B.C.R. - PALM BEACH COUNTY RECORDS, P.L.S. - PROFESSIONAL LAND SURVEYOR, P.R.M. - PERMANENT REFERENCE MONUMENT, P.S.M. = PROFESSIONAL SURVEYOR & MAPPER, R.P.B. = ROAD PLAT BOOK.



NOTICE:
 THIS PLAT, AS RECORDED IN ITS GRAPHIC FORM, IS THE OFFICIAL DEPICTION OF THE SUBDIVIDED LANDS DESCRIBED HEREIN AND WILL IN NO CIRCUMSTANCES BE SUPPLANTED IN AUTHORITY BY ANY OTHER GRAPHIC OR DIGITAL FORM OF THE PLAT. THERE MAY BE ADDITIONAL RESTRICTIONS THAT ARE NOT RECORDED ON THIS PLAT THAT MAY BE FOUND IN THE PUBLIC RECORDS OF PALM BEACH COUNTY.



AVIROM & ASSOCIATES, INC.
 SURVEYING & MAPPING
 50 S.W. 2ND AVENUE, SUITE 102
 BOCA RATON, FLORIDA 33432
 TEL. (561) 392-2594, FAX (561) 394-7125
 www.AVIROM-SURVEY.com
 © 2018 AVIROM & ASSOCIATES, INC. All rights reserved.
 This sketch is the property of AVIROM & ASSOCIATES, INC. and should not be reproduced or copied without written permission.